



**THE
 VISIBLY
 BETTER
 ALTERNATIVE
 TO VIDEO
 QUADS**

- 4X Video Resolution – Up to 1600 x 1200 Pixels**
- Auxiliary Video Output for a VCR or Video Codec**
- 8 Composite or 4 S-Video Inputs**
- 4 SDI Inputs**
- Labeling**
- Custom Borders**
- Full Screen and Quad Display Modes**
- Synchronous or Asynchronous Inputs**

4VIEW

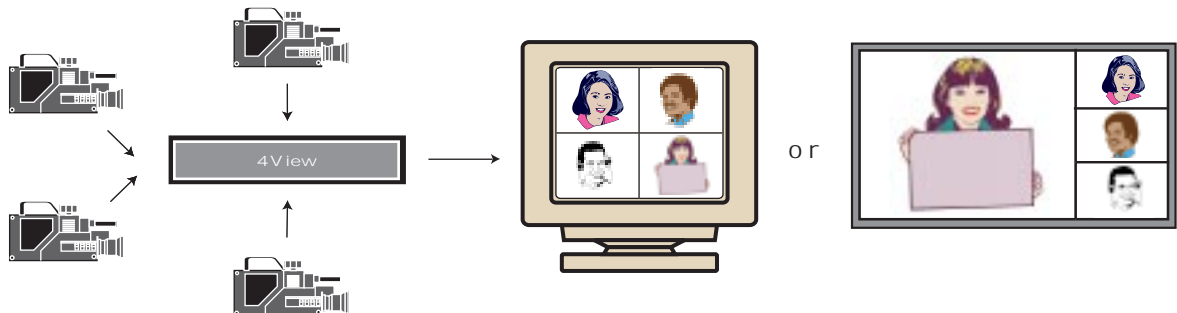
A Video Quad Display with a Difference

Traditional video quads display each video signal at 25% of true resolution. The new 4View™ is different – all four video inputs are displayed at full resolution on a 1280 x 1024p or 1600 x 1200i pixel raster, and any input can be scaled up to full screen. The improvement in visual quality is stunning.

Various models offer NTSC/PAL composite, S-Video and SDI (CCIR 601) digital video inputs. In addition to high resolution RGB output, a full time auxiliary NTSC video output is available to connect to a codec for video teleconferencing applications.

Set up and control of the 4View is simple, with both front panel control and remote control via an RS-232 port. Image controls include brightness, contrast, saturation, hue, and sharpness. Display modes include full screen, quad mode, labeling, and bank switching of composite inputs.

A 16:9 wide screen mode is also supported.



MODEL	INPUTS				OUTPUT
	Format	Composite	S-Video	SDI	
100	NTSC / 525 Line	8	4	-	1280 x 1024p 4:3 or 1500 x 1080i 4:3 or 1280 x 768p 16:9
	PAL / 625 Line	8	4	-	1600 x 1200i 4:3
100 SDI	NTSC / 525 Line	8	4	4	1500 x 1080i 4:3
	PAL / 625 Line	8	4	4	1600 x 1200i 4:3
200	NTSC / 525 Line	8	4	-	1280 x 1024p 4:3 and NTSC and S-Video

Video Monitoring

Video Conferencing

Surveillance

Distance Learning

Security

Specifications

Video Inputs

8 NTSC/PAL composite video, on BNCs or
4 S-Video, on 2 BNCs each
4 SDI (CCIR 601), on BNCs (Model 100 SDI)

High Resolution Output

For 525 line (NTSC) inputs:
1280 x 1024p, V 59.94 Hz, H 63.9 kHz (Model 100/200)
1500 x 1080i, V 59.94 Hz, H 33.7 kHz (Model 100/100 SDI)
1280 x 768p, V 59.94 Hz, H 63.9 kHz (Model 100)
For 625 line (PAL) inputs:
1600 x 1200i, V 50 Hz, H 31.43 kHz (Model 100/100 SDI)

Connector:
15-pin HD D-sub female

Auxiliary Outputs (Model 200)

NTSC Composite Video, on BNC connector
NTSC S-Video, on 4-pin mini-DIN connector

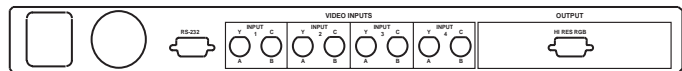
Features/Image Control

Full screen display, quad display, labeling, borders, bank switching
(composite inputs), brightness, contrast, saturation, hue, sharpness,
freeze, overscan

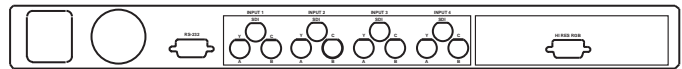
Other

Size: 17.2" (W) x 12.0" (D) x 1.7" (H)
Rackmount: 1U rackmount kit included
Control: RS-232 and front panel
Weight: 7 lbs
Power: <30 Watts, 100-240 VAC, 47-63 Hz

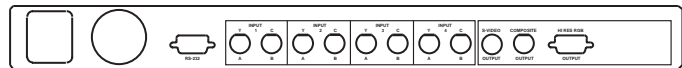
Front and Back Panel Configurations



Model 100



Model 100 SDI



Model 200