

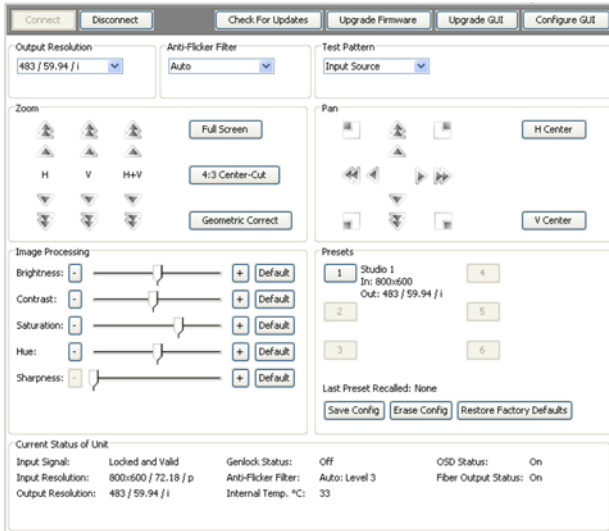
KBS MBC SBS EBS 공중파 4개 방송국 납품



**NEW!**

고해상도의 디지털 DVI신호와 아날로그 RGB신호를 SMPTE 스탠다드의 3G-SDI 및 HD/SD-SDI 신호로 변환하는 방송급 프로페셔널 스캔컨버터입니다.

Scan Do HD



Control your Scan Do® HD from anywhere in the world!

TCP/IP 를 통한 웹베이스 컨트롤로 어디서나 간편한 조작과 업데이트가 가능합니다

With onboard Ethernet and RS-232, the Scan Do HD allows you to control resolution, zoom, pan, image processing controls, anti-flicker reduction, test patterns and more!



The Scan Do HD works brilliantly with our Fiberlink 3350 3G/HD/SDI Series

ScanDo HD가 업그레이드 되었습니다. 3G-SDI를 새로이 지원하며 독보적인 웹컨트롤과 한층 더 진보한 성능, 그리고 변함없는 신뢰성으로 방송급 스캔컨버터를 선도합니다.

### SPECIFICATIONS

- 입력 : 1 x DVI-I (DVI or RGB), loop-through up to 1920 x 1200
- 출력 : 2 x 3G or HD/SD-SDI  
1 x Fiber Optical 광출력
- 제어 : 1 x TCP/IP 웹베이스 컨트롤  
1 x RS-232  
Front panel control
- 싱크 : NTSC/PAL black burst or HD tri-level sync
- 기능 : ZOOM and PAN control  
Video Processing Control (Brightness, Contrast, Hue, Saturation, Sharpness)  
Variable Flicker reduction  
Test pattern generator (100%, 75% Color Bar)  
Multiple Preset setting  
Factory defaults reset
- 전원 : 95-250 VAC, 47-63Hz, 20W

| Signals In                                 | Signals Out                                   |
|--|---|
| DVI Input or Analog RGB<br>Up to 1920x1200 | 3G/HD/SD-SDI<br>Copper & Fiber<br>Up to 1080p |

### New Features at a glance:

- Digital DVI & Analog RGB Input Support
- 3G Output Support (SMPTE 424M-2006)
- Store & Recall Presets from the Front Panel with Preset Status LEDs
- PsF Output Support
- Capture & Store EDID
- SMPTE 297-2006 Compliant Fiber Optic Output
- Fiber Optic, On Screen Display & Keypanel Lock Status LEDs
- Alternate Function Button

### Output Resolutions

#### 10-bit 3G-SDI per SMPTE 424M-2006:

1080/60/P      1080/59.94/P

1080/50/P

#### 10-bit HD-SDI per SMPTE 292:

720/60/P      720/59.94/P

720/50/P      720/30/P

720/29.97/P      720/25/P

720/24/P      720/23.98/P

1035/60/I      1035/59.94/I

1080/60/I      1080/59.94/I

1080/50/I      1080/30/P

1080/30/PsF      1080/29.97/P

1080/29.97/PsF      1080/25/P

1080/25/PsF      1080/24/P

1080/24/PsF      1080/23.98/P

1080/23.98/PsF

#### 10-bit SD-SDI per SMPTE 259:

525/59.94/I (NTSC)      625/50/I (PAL)

### Input/Output

Single link DVI-I with active loop-thru support; includes 15pin adapter for Analog RGBHV support

Two coaxial outputs; SMPTE 292M, 259M-C & 424M-2006 Level A

One optical output; SMPTE 297-2006 compliant, 1310 nm, single mode or multimode fiber, LC connector, -3.5 dBm nominal output power

Only one output format is available on all outputs at one time.